

CLAM - CLM

Pomello a 3 Lobi con Perno Filettato

3 Lobe Knob with Threaded Stud

Codice Arancio Orange Code	Codice Nero Black Code	D	H	d1	d	e	h2	U.V.
CLAM250415	CLM250415	25	17	12	04MA	15	6	10
CLAM250620	CLM250620	25	17	12	06MA	20	6	10
CLAM320520	CLM320520	32	20	14	05MA	20	6	10
CLAM320620	CLM320620	32	20	14	06MA	20	6	10
CLAM320827	CLM320827	32	20	14	08MA	27	6	10
CLAM320840	CLM320840	32	20	14	08MA	40	6	10
CLAM400815	CLM400815	40	25	17	08MA	15	7	10
CLAM400833	CLM400833	40	25	17	08MA	33	7	10
CLAM401044	CLM401044	40	25	17	10MA	44	7	10
CLAM501033	CLM501033	50	32	19	10MA	33	8	10
CLAM501050	CLM501050	50	32	19	10MA	50	8	10
CLAM501240	CLM501240	50	32	19	12MA	40	8	10
CLAM631033	CLM601033	63	40	23	10MA	33	11	10
CLAM631240	CLM601240	63	40	23	12MA	40	11	10

Caratteristiche

Materiale Corpo:

Poliammide rinforzata fibra di vetro

Parte Metallica e/o Fissaggio:

Vite filettata in acciaio zincato

Colori:



Su richiesta:



Product specification

Main Part Material:

Fiberglass-reinforced polyamide

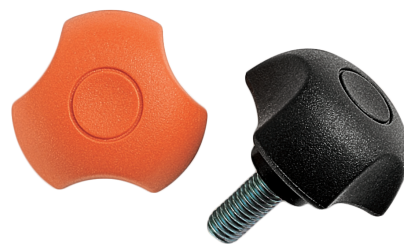
Metal and/or Fastening part:

Zinc plated threaded stud

Colours:



On Request:



CLAM - CLM

