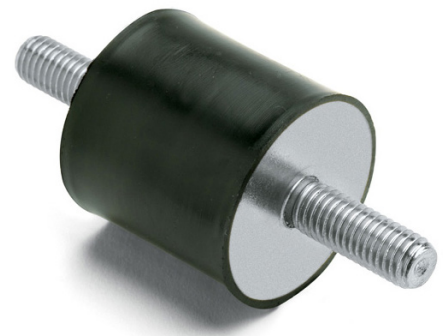


MMT

Antivibrante Cilindrico in Acciaio Zincato Maschio/Maschio (Gomma Tenera)

Zinc Plated Double Male Cylindrical Mounting (Soft Type)



Cod.	A	B	M	E	Carico max a Compr. Max Compression Load daN	Carico max a Taglio Max Shear Load daN
A1MMT2520	25	20	06MA	18	27	3,3
A1MMT3015	30	15	08MA	23	34	3,8
A1MMT3020	30	20	08MA	23	40	6
A1MMT3030	30	30	08MA	23	37	4,7
A1MMT4030	40	30	08MA	23	59	10
A1MMT4040	40	40	08MA	23	73	10
A1MMT5030	50	30	10MA	28	95	13
A1MMT5040	50	40	10MA	28	88	11

Caratteristiche

Materiale corpo: Miscela gomma NR/SBR

Durezza standard: 45 shore A

Tolleranza sulla durezza: +/- 5 SH

A richiesta: Differenti lunghezze della vite

Parte metallica e/o fissaggio:

Vite e rondella zincate

Tipo inserto standard:

Vite pressata sulla rondella

Product specification

Main part material:

NR/SBR rubber compound

Standard hardness: 45 shore A

Hardness tolerance: +/- 5 SH

On request: Different screw lengths

Metallic part: Zinc plated screw and washer

Standard thread:

Screw pressed on the washer

