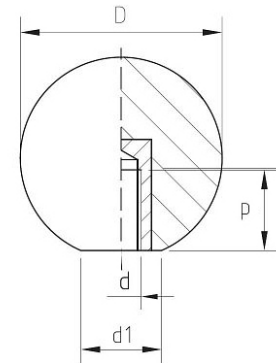


Pomolo a Sfera con Boccola in Ottone Filettata

Ball Knob, Threaded Brass Insert

Cod.	D	d	P	d1	Peso Weight gr	U.V.
B1PSB2004	20	04MA	8	8	7	20
B1PSB2005	20	05MA	10	8	8	20
B1PSB2006	20	06MA	12	8	8	20
B1PSB2606	26	06MA	12	12	15	20
B1PSB2608	26	08MA	16	12	17	20
B1PSB3006	30	06MA	12	16	21	20
B1PSB3008	30	08MA	16	16	23	20
B1PSB3010	30	10MA	22	16	25	20
B1PSB3508	35	08MA	16	16	35	20
B1PSB3510	35	10MA	22	16	37	20
B1PSB3512	35	12MA	22	16	41	20
B1PSB4008	40	08MA	16	16	52	20
B1PSB4010	40	10MA	22	16	53	20
B1PSB4012	40	12MA	22	16	60	20
B1PSB4510	45	10MA	22	22	70	20
B1PSB4512	45	12MA	22	22	78	20
B1PSB4514	45	14MA	22	22	78	20
B1PSB4516	45	16MA	22	22	85	20
B1PSB5010	50	10MA	22	22	98	20
B1PSB5012	50	12MA	22	22	104	20
B1PSB5014	50	14MA	22	22	104	20
B1PSB5016	50	16MA	22	22	114	20



Caratteristiche

Materiale Corpo:

Fenoplasto rinforzato di colore nero, resistente a solventi, oli, grassi ed altri agenti chimici (PF)

Parte Metallica e/o Fissaggio:

Boccola in ottone con foro cieco filettato

Product specification

Main Part Material:

Black phenoplast, resistant to solvents, oils, greases and other chemical agents (PF)

Metal and/or Fastening part:

Brass Insert, Threaded Blind Hole