

# SF - SFF

## Supporto Antivibrante Rettangolare Forato

### Rectangular Antivibration Mount

Cod.	B	G	H	F	E	S	Carico max Statico Max Load daN
A2SF50	50	85	115	13	45	2	300
A2SF100	100	135	165	13	45	3	500
* A2SFF100	100	135	165	12,2	24	3	500
A2SF150	150	185	215	12,2	46	3	750
A2SF200	200	235	265	12,2	46	3	1000

#### Caratteristiche

**Materiale corpo:** Miscela gomma NR/SBR

**Durezza standard:** 60 shore A

**Tolleranza sulla durezza:** +/- 5 SH

**A richiesta:** 45 shore A

**Parte metallica e/o fissaggio:**

Lamiera acciaio zincata

**Tipo inserto standard:**

Con perno filettato MA 12X37

\* ART. A2SFF100 con perno estraibile

#### Product specification

**Main part material:**

NR/SBR rubber compound

**Standard hardness:** 60 shore A

**Hardness tolerance:** +/- 5 SH

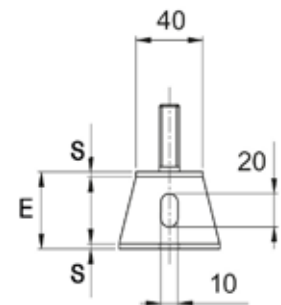
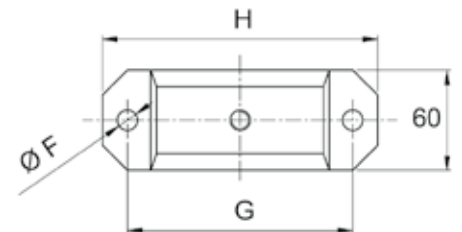
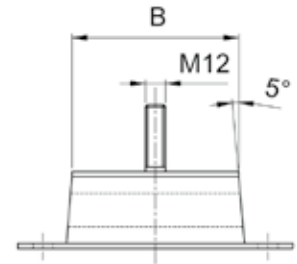
**On request:** 45 shore A hardness

**Metallic part:** Zinc plated steel sheet

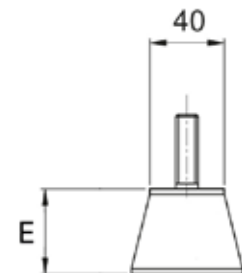
**Standard thread:**

With screw MA 12x37

\* ART. A2SFF100 with extractable screw



A2SF



\* A2SFF

