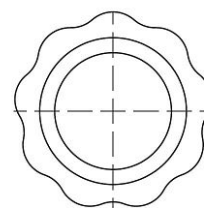
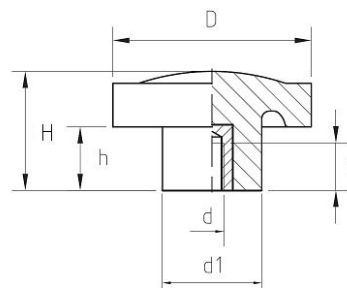


Volantino 9 Punte con Boccola Ottone Filettata

Handwheel, 9 Points, Threaded Insert

Cod.	D	d	P	H	h	d1	Peso Weight gr	U.V.
B1V9B2004	20	04MA	8	18	8	13	6	20
B1V9B2005	20	05MA	10	18	8	13	7	20
B1V9B2006	20	06MA	12	18	8	13	7	20
B1V9B2008	20	08MA	12	18	8	13	8	20
B1V9B2505	25	05MA	10	18	9	16	10	20
B1V9B2506	25	06MA	12	18	9	16	10	20
B1V9B2508	25	08MA	16	22	12	16	15	20
B1V9B3005	30	05MA	10	23	8	17	17	20
B1V9B3006	30	06MA	12	23	8	17	16	20
B1V9B3008	30	08MA	16	23	8	17	19	20
B1V9B3010	30	10MA	16	23	8	17	20	20
B1V9B4006	40	06MA	12	24	14	21	20	20
B1V9B4008	40	08MA	16	24	14	21	22	20
B1V9B4010	40	10MA	16	24	14	21	24	20
B1V9B5006	50	06MA	12	30	16	25	42	20
B1V9B5008	50	08MA	16	30	16	25	42	20
B1V9B5010	50	10MA	22	30	16	25	44	20
B1V9B5012	50	12MA	22	30	16	25	51	20
B1V9B6008	60	08MA	16	34	18	27	60	20
B1V9B6010	60	10MA	22	34	18	27	61	20
B1V9B6012	60	12MA	22	34	18	27	69	20
B1V9B7010	70	10MA	22	35	19	31	79	20
B1V9B7012	70	12MA	22	35	19	31	76	20
B1V9B7014	70	14MA	22	35	19	31	89	20
B1V9B7016	70	16MA	22	35	19	31	97	20



Caratteristiche

Materiale Corpo:

Fenoplasto rinforzato di colore nero, resistente a solventi, oli, grassi ed altri agenti chimici (PF)

Parte Metallica e/o Fissaggio:

Boccola in ottone con foro cieco filettato

Product specification

Main Part Material:

Black phenoplast, resistant to solvents, oils, greases and other chemical agents (PF)

Metal and/or Fastening part:

Brass insert, threaded blind hole