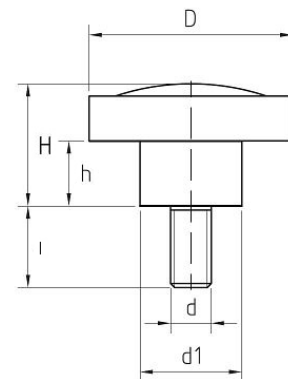
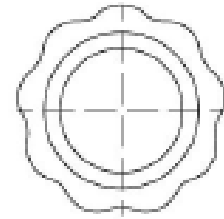


V9M

Volantino 9 Punte con Perno in Ferro Filettato Handwheel, 9 Points, Threaded Stud



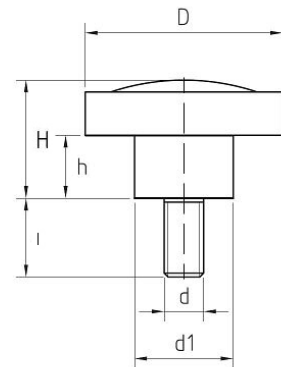
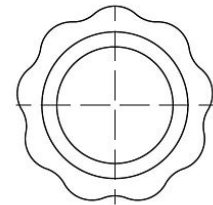
Cod.	D	d	l	H	h	d1	Peso Weight gr	U.V.
B1V9M200415	20	04MA	15	17	8	13	7	20
B1V9M200420	20	04MA	20	17	8	13	7	20
B1V9M200425	20	04MA	25	17	8	13	7	20
B1V9M200510	20	05MA	10	17	8	13	8	20
B1V9M200515	20	05MA	15	17	8	13	8	20
B1V9M200520	20	05MA	20	17	8	13	8	20
B1V9M200525	20	05MA	25	17	8	13	10	20
B1V9M200530	20	05MA	30	17	8	13	11	20
B1V9M200612	20	06MA	12	17	8	13	9	20
B1V9M200615	20	06MA	15	17	8	13	10	20
B1V9M200620	20	06MA	20	17	8	13	11	20
B1V9M200625	20	06MA	25	17	8	13	12	20
B1V9M200630	20	06MA	30	17	8	13	12	20
B1V9M200640	20	06MA	40	17	8	13	13	20
B1V9M250515	25	05MA	15	18	9	16	10	20
B1V9M250520	25	05MA	20	18	9	16	12	20
B1V9M250530	25	05MA	30	18	9	16	14	20
B1V9M250540	25	05MA	40	18	9	16	15	20
B1V9M250550	25	05MA	50	18	9	16	15	20
B1V9M250612	25	06MA	12	18	9	16	12	20
B1V9M250615	25	06MA	15	18	9	16	13	20



[Continua pag. 2](#)

Continua da V9M.

Cod.	D	d	l	H	h	d1	Peso Weight gr	U.V.
B1V9M250620	25	06MA	20	18	9	16	16	20
B1V9M250630	25	06MA	30	18	9	16	15	20
B1V9M250640	25	06MA	40	18	9	16	17	20
B1V9M250650	25	06MA	50	18	9	16	19	20
B1V9M250815	25	08MA	15	18	9	16	18	20
B1V9M250820	25	08MA	20	18	9	16	19	20
B1V9M250830	25	08MA	30	18	9	16	21	20
B1V9M250840	25	08MA	40	18	9	16	24	20
B1V9M300525	30	05MA	25	23	8	17	18	20
B1V9M300615	30	06MA	15	23	8	17	19	20
B1V9M300620	30	06MA	20	23	8	17	20	20
B1V9M300625	30	06MA	25	23	8	17	21	20
B1V9M300630	30	06MA	30	23	8	17	21	20
B1V9M300650	30	06MA	50	23	8	17	22	20
B1V9M300820	30	08MA	20	23	8	17	26	20
B1V9M300830	30	08MA	30	23	8	17	27	20
B1V9M400630	40	06MA	30	24	14	21	26	20
B1V9M400640	40	06MA	40	24	14	21	27	20
B1V9M400650	40	06MA	50	24	14	21	28	20
B1V9M400815	40	08MA	15	24	14	21	28	20
B1V9M400820	40	08MA	20	24	14	21	29	20
B1V9M400830	40	08MA	30	24	14	21	33	20
B1V9M400840	40	08MA	40	24	14	21	36	20
B1V9M400860	40	08MA	60	24	14	25	42	20
B1V9M401030	40	10MA	30	24	14	25	40	20
B1V9M401050	40	10MA	50	24	14	25	50	20
B1V9M500820	50	08MA	20	30	16	25	50	20
B1V9M500830	50	08MA	30	30	16	25	52	20
B1V9M500850	50	08MA	50	30	16	25	55	20
B1V9M501020	50	10MA	20	30	16	25	58	20
B1V9M501030	50	10MA	30	30	16	25	60	20
B1V9M501040	50	10MA	40	30	16	25	65	20
B1V9M501050	50	10MA	50	30	16	25	71	20
B1V9M600830	60	08MA	30	34	18	27	68	20
B1V9M601030	60	10MA	30	34	18	27	76	20
B1V9M601040	60	10MA	40	34	18	27	80	20
B1V9M601050	60	10MA	50	34	18	27	84	20
B1V9M601230	60	12MA	30	34	18	27	90	20
B1V9M601250	60	12MA	50	34	18	27	105	20
B1V9M701040	70	10MA	40	35	19	31	103	20



Caratteristiche

Materiale Corpo:

Fenoplasto rinforzato di colore nero, resistente a solventi, oli, grassi ed altri agenti chimici (PF)

Parte Metallica e/o Fissaggio:

Perno in AVP zincato filettato, estremità smussate

Product specification

Main Part Material:

Black phenoplast, resistant to solvents, oils, greases and other chemical agents (PF)

Metal and/or Fastening part:

Zinc plated steel threaded stud, rounded edges